



**Newsletter June 2024**

**[info@redhall.dudley.sch.uk](mailto:info@redhall.dudley.sch.uk)**

**Tel: 01384 813850**

**Website: [Red Hall Primary School - Home](#)**

Dear Parents/Carers,

As we move into our final term of the year we are very much looking forward to the events that take place: Sports Day, school reports being sent out, meeting new teacher and enjoying all of our learning in our current class. Please do take note of the calendar that is included so that you can join in with all our special events.

I wish to take this opportunity to notify you of the forthcoming changes due to attendance. As you will be aware, this is a key focus for improvement at Red Hall. If your child is not in school regularly, this impacts their learning and their social interactions.

- **CHANGES TO PENALTY NOTICES FOR UNAUTHORISED ABSENCE**

With the introduction of the new National Framework for Penalty Notices, the following changes will come into force for penalty notices issued for unauthorised absence recorded by schools after **19th August 2024**.

- The threshold for a penalty notice will be changing: 10 sessions absence (equivalent to 5 school days) of unauthorised absence within a rolling 10 school week period. The 10-school week period can span different terms or school years.

- **Who may be fined?**

Penalty notices may be issued to each parent who allows their child to be absent from school. However, they should usually only be issued to the parent or parents who have allowed the absence (regardless of which parent has applied for a leave of absence).

**First offence**

The first time a penalty notice is issued, the fine amount will be **£160 per parent, per child** if paid **within 28 days**, reduced to **£80 if paid within the first 21 days**.

**Second offence (within 3 years)**

The second time a penalty notice is issued, the amount will be **£160 per parent, per child**, payable **within 28 days**. The lower rate is not an option.

**Third offence and any further offences (within 3 years)**

The third time an offence is committed, a penalty notice will not be issued and local authorities will need to consider other available measures to address the absence concerns. Parents found guilty of an offence under s444 (Education Act 1996) can be fined up to **£2,500** and will have a criminal conviction.

The above steps of escalation relate to each individual child and each parent. This will mean, for example, that a parent may be fined in respect of one child but prosecuted in respect of another for the same leave of absence period.

## FRAMEWORK

A penalty notice issued for any offence that begins (i.e. the first recorded absence for the evidence period) prior to the 19th August will be issued under the existing rules. Therefore, it will:

- be charged at £60/£120,
- not count towards the escalation whereby a second penalty notice within 3 years is charged at a flat rate of £160 and there is a limit of 2 penalty notices within 3 years and
- will be issued in line with existing LA thresholds for the 2023-24 academic year.

This is regardless of whether the penalty notice is issued before or after the 19th August.

For example, if a parent takes a pupil out of school without granted leave in term time for 2-weeks in July 2024 but the penalty notice is not issued until September by SA&ESS the old rules will be followed, including being charged at the old rates. The penalty notice will not count towards the escalation.

Or, for example, a parent takes a pupil out of school in late July without permission and does not return until September and the penalty notice is issued in the new academic year, the old rules will be followed, including being charged at the old rates of £60/£120. The penalty notice will not count towards the escalation.

A penalty notice issued for any offence that begins (i.e. when the first absence is recorded) on or after 19th August will be issued under the new rules. Therefore, it will:

- be charged at £80/£160,
- count towards the escalation, and
- be issued in line with the new national threshold of 10 sessions in 10 weeks.

Currently, the previous arrangements are still in place. I understand that this information may come as a surprise or even shock to some of you. As a school, we have to follow this new national framework and legal intervention. We will continue to review cases on an individual basis and consider the specific facts and circumstances. We pride ourselves in our positive relationships with have with families and that we can discuss leave of absences openly.

Please don't hesitate to speak with myself, or Mrs Pick, the school attendance officer, should you require further clarification for what this means for you and your particular circumstances.



**To help us to return items to the correct child please ensure that all items are labelled. There is no central lost property box now so items that are lost will likely be within the classroom.**

These are the emails for contacting class teachers:

[Year5\\_6@redhall.dudley.sch.uk](mailto:Year5_6@redhall.dudley.sch.uk)

[Year3\\_4@redhall.dudley.sch.uk](mailto:Year3_4@redhall.dudley.sch.uk)

[Year2@redhall.dudley.sch.uk](mailto:Year2@redhall.dudley.sch.uk)

[Year1@redhall.dudley.sch.uk](mailto:Year1@redhall.dudley.sch.uk)

[Reception@redhall.dudley.sch.uk](mailto:Reception@redhall.dudley.sch.uk)

[Nursery@redhall.dudley.sch.uk](mailto:Nursery@redhall.dudley.sch.uk)

Office email and general enquiries:

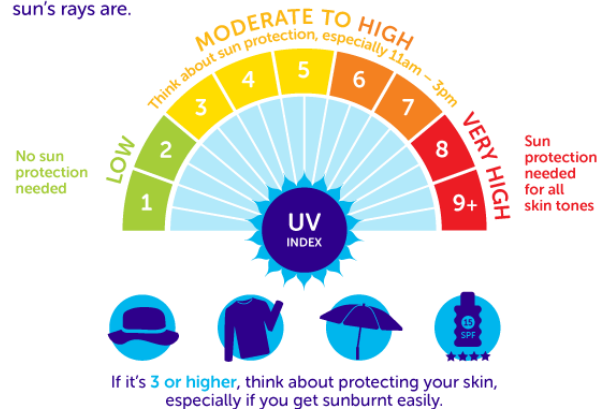
[info@redhall.dudley.sch.uk](mailto:info@redhall.dudley.sch.uk)

# Sun Safety

We are talking to the children about the need to keep safe in the sun. Children should apply suncream in the morning before school. If you wish them to re-apply you will need to provide them with suncream that is clearly labelled. They are not allowed to share this with other children. Please encourage your child to wear a sunhat and sunglasses.

## DON'T LET SUNBURN CATCH YOU OUT

Check the UV index at [www.metoffice.gov.uk/uv](http://www.metoffice.gov.uk/uv) to see how strong the sun's rays are.



LET'S BEAT CANCER SOONER  
[cruk.org](http://cruk.org)



## Updates to school site:

Year 5 and Year 6 classrooms have been fitted with solar UV screens. This is to help reduce the temperature in these classrooms to help ensure that the environment is conducive to learning. I am sure that children will feel the benefit in these spaces.

Flooring has been updated in walk spaces in KS1 and Early Years site. It looks really smart!

The KS2 wild area is booked to have a new playground space for the children to enjoy when they come back in September 2024. This is phase 1 of the design, with more plans in the pipeline for next year. We are really excited by this!

## NEW STAFF:

**Welcome to Mrs Greenway, a new TA in Year 5 and Year 6 and to Miss Mahmood a new TA in Year 3 and 4.**

**Volunteering:** Do you have a couple of hours spare and think you would like to support children in school? We are on the look out for volunteers who can help with support in school. A full induction would be required and a DBS check. If you are interested, in the first instance, speak with our friendly School Business Manager, Michelle Hackett.

## TERM DATES

Nursery	<ul style="list-style-type: none"> <li>○ 28<sup>th</sup> June: EYFS picnic 11.30am</li> <li>○ 12<sup>th</sup> July: Graduation event</li> <li>○ 17<sup>th</sup> July: Brockwood Animal Sanctuary</li> <li>○ 17<sup>th</sup> July: LAST day for nursery</li> </ul>
Reception	<ul style="list-style-type: none"> <li>○ 28<sup>th</sup> June: EYFS picnic 11.30am</li> <li>○ 10<sup>th</sup> July: West Midlands Safari Park visit</li> <li>○ 18<sup>th</sup> July: Graduation event</li> </ul>
Year 1	<ul style="list-style-type: none"> <li>○ W.c. 10<sup>th</sup> June: Phonic screening check week</li> <li>○ 18<sup>th</sup> June: Y1 visit Zoar Church</li> <li>○ 28<sup>th</sup> June: Baggeridge Wood event</li> </ul>
Year 2	<ul style="list-style-type: none"> <li>○ W.c. 10<sup>th</sup> June: Phonic re-screening check</li> <li>○ 14<sup>th</sup> June: Beach themed day in school</li> <li>○ 2<sup>nd</sup> July Himley Beach day. This will be an event where parents will meet their child at Himley to enjoy the Beach event. A further letter will be sent out.</li> </ul>
Year 3	<ul style="list-style-type: none"> <li>○ 3<sup>rd</sup> July Roman Day</li> <li>○ 15<sup>th</sup> July Fife performance @2.30pm</li> </ul>
Year 4	<ul style="list-style-type: none"> <li>○ 3<sup>rd</sup> June: over the next fortnight children will participate in the statutory times table check</li> <li>○ 9<sup>th</sup> July: French café @ 2.30pm</li> </ul>
Year 5	<ul style="list-style-type: none"> <li>○ 18<sup>th</sup> June: Y5/6 Maths Championship team event</li> </ul>
Year 6	<ul style="list-style-type: none"> <li>○ 5<sup>th</sup> June: Y6 residential to Pioneer Centre</li> <li>○ 18<sup>th</sup> June: Y5/6 Maths Championship team event</li> <li>○ 1<sup>st</sup> -5<sup>th</sup> July Dudley Secondary school transition week. You will need to check the dates for your child's new school</li> <li>○ 16<sup>th</sup> July: Y6 Leavers' Party</li> <li>○ 19<sup>th</sup> July: Y6 Leavers' Assembly and picnic 11.30am</li> </ul>
Whole School	<ul style="list-style-type: none"> <li>○ Monday 3<sup>rd</sup> June: Return to school</li> <li>○ Tuesday 4<sup>th</sup> June: Class photos</li> <li>○ Weds 5<sup>th</sup> June: Induction for new Nursery parents 2pm</li> <li>○ Tuesday 11<sup>th</sup> June: Attendance Reward</li> <li>○ Weds 12<sup>th</sup> June: Induction for new Reception parents 2pm</li> <li>○ Thursday 20<sup>th</sup> June: Art day – children can come to school in clothes that you don't mind them getting a little glue and paint on</li> <li>○ Monday 24<sup>th</sup> June: Sports Day – further details will follow</li> <li>○ Thursday 4<sup>th</sup> July: Gallery afternoon @ 2pm. Come and see your child's fantastic art work!</li> <li>○ Monday 8<sup>th</sup> July: New Reception transition 1- 2.30pm (1/2 cohort)</li> <li>○ Tues 9<sup>th</sup> July: New Reception transition 9.30 -11am(1/2 cohort)</li> <li>○ Weds 10<sup>th</sup> July: Meet your new teacher: Move on! Move up!</li> <li>○ Thurs 11<sup>th</sup> July: New Reception transition 9.30 – 11</li> <li>○ Friday 19<sup>th</sup> July: Last day of school. Finish at 2pm</li> <li>○ 2<sup>nd</sup> + 3<sup>rd</sup> Sept: INSET days</li> <li>○ 4<sup>th</sup> September: Children back to school</li> <li>○ 25<sup>th</sup> October: Half-term</li> <li>○ 4<sup>th</sup> November: Children back to school</li> <li>○ 20<sup>th</sup> December: Finish for Christmas holidays 2pm finish</li> <li>○ 7<sup>th</sup> January: Children back to school</li> </ul>

NB: Calendar dates for the year can be viewed on the website link: [Red Hall Primary School - Calendar](#)

Weekly reminders are sent out via SchoolLife App and our Facebook page

